

Part number:

**HYDROMA**

HYDRAULICKÉ SYSTÉMY

**HIDROMA  
SYSTEMS**

UKŁADY HYDRAULICZNE

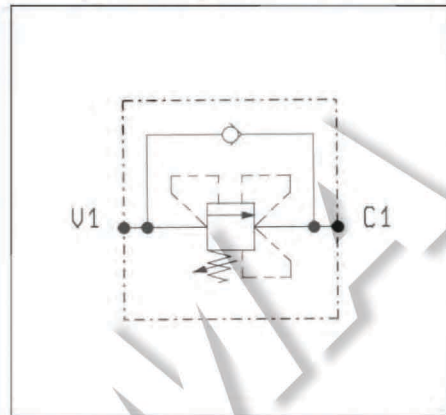
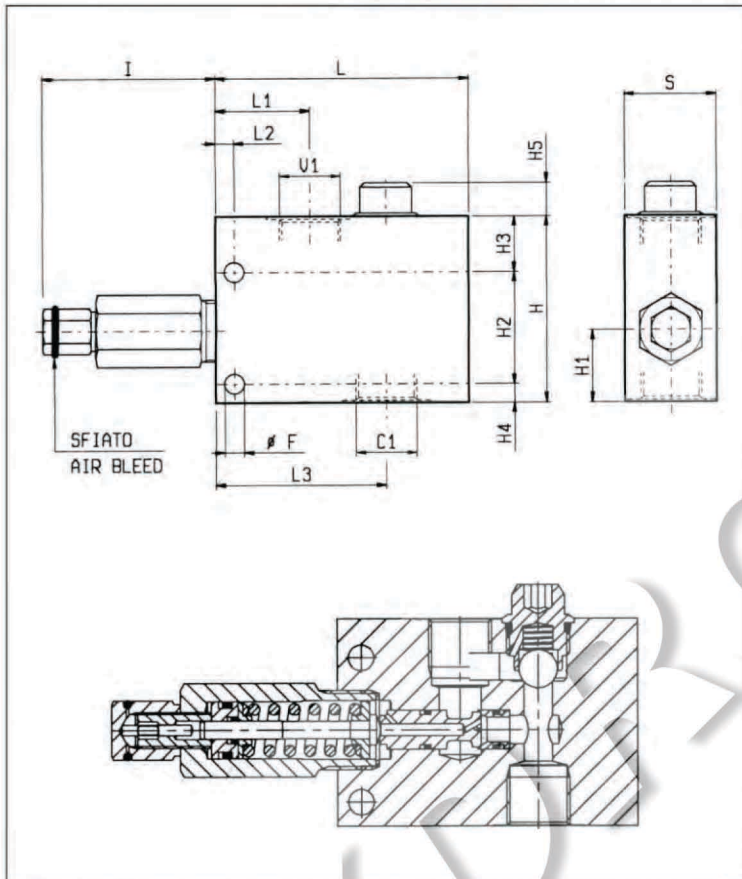
**HYDROMA**

ГИДРАВЛИЧЕСКИЕ СИСТЕМЫ

**SEQUENZA, OTTURATORE DIFFERENZIALE  
DIFFERENTIAL PISTON SEQUENCE**

**VSQD-CC**

**05.22.03 - X - Y - Z**



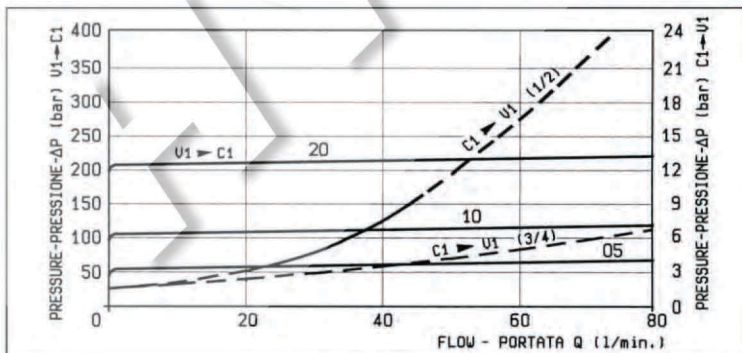
**DATI TECNICI / TECHNICAL DATA**

Pressione di lavoro max. 350 bar  
Max. working pressure

Portata max. 80 l/min  
Flow max.

Funzionamento corretto con pressione sul circuito secondario non inferiore a 20 bar.  
For good performance, the pressure in the secondary circuit should not drop below 20 bar.

40	74	8	41	110	75	13	8	24	48	31	80	8.5			3/4	1.39
35	67	8	41	100	75	10	8	13	48	32	69	8.5			1/2	1.11
<b>S</b>	L3	L2	L1	L	I	H5	H4	H3	H2	H1	H	F		<b>Y</b>		Peso kg Weight kg



**X REGOLAZIONI  
ADJUSTMENTS**

**03** vite interna esagono incassato leakproof inner hex. socket screw



<b>Z</b>	<b>MOLLE / SPRINGS</b>				
	Campo taratura min - max bar Adj. press. range bar	Incremento press. bar / giro vite Press. increase bar / turn	Taratura standard bar (Q = 5 l/min) Std. setting bar (Q = 5 l/min)	Cod. ordinazione Ordering code	Colore Colour
<b>05</b>	15-50	15.5	50	03.51.01.150	nero black
<b>10</b>	40-100	33	100	03.51.01.151	blu blue
<b>20</b>	70-210	68	200	03.51.01.152	verde green

**Y ATTACCHI / PORT SIZE  
V1-C1**

**03** G 1/2  
**04** G 3/4