

Part number:



**HYDROMA**

HYDRAULICKÉ SYSTÉMY

**HIDROMA  
SYSTEMS**

UKŁADY HYDRAULICZNE

**HYDROMA**

ГИДРАВЛИЧЕСКИЕ СИСТЕМЫ

# Pump unloading

VEP-VSP2

05.90.06 - X - Y - Z

**RE 18310-13**

Edition: 03.2016

Replaces: 04.2010



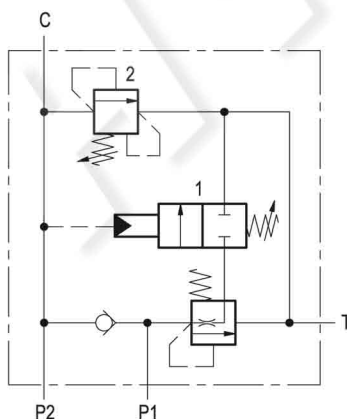
## Technical data

Operating pressure	P1 = 100 bar (1450 psi) P2 = 210 bar (3000 psi)
Max. flow of valve 2	30 l/min. (8 gpm)
Weight	2.5 kg (5.5 lbs)
Manifold material	Aluminium
Note: aluminium bodies are often strong enough for operating pressures exceeding 210 bar (3000 psi), depending from the fatigue life expected in the specific application. If in doubt, consult our Service Network.	
Fluid	Mineral oil (HL, HLP) according DIN 51524
Fluid temperature range	-30 °C to 100 (-22 to 212 °F)
Viscosity range	10 to 500 mm <sup>2</sup> /s (cSt)
Recommended degree of fluid contamination	Class 19/17/14 according to ISO 4406
Other technical data	see data sheet 18350-50

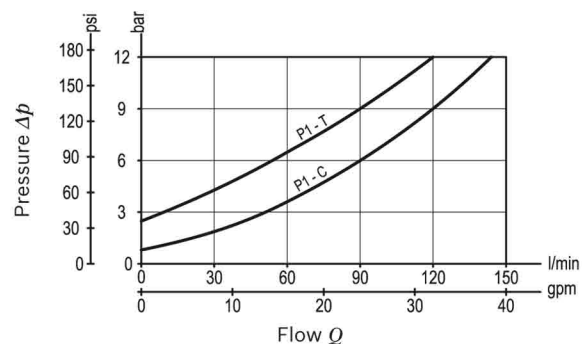
Note: for applications outside these parameters, please consult us.

## Description

Through the check valve, the pump inlet P1 is combined to the inlet P2 to give maximum flow out of C at low pressure. As load pressure (C) increases and reaches the selected unloading setting, the pilot piston (1) is displaced and exhausts to tank the spring chamber of the main spool allowing P1 pump to be by-passed to tank. Above this pressure threshold, only P2 pump continues to deliver oil out of C, with a resulting reduced flow at high pressure. The incorporated relief cartridge (2) provides protection by limiting the maximum pressure in the system line (C).



## Characteristic curve



**Ordering code**

<b>05.90.06</b>	<b>X</b>	<b>Y</b>	<b>Z</b>
-----------------	----------	----------	----------

Pump unloading

Adjustments

**03** Leakproof hex. socket screw



Port sizes	P1 - P2	C	T
<b>04</b>	G 3/4	G 3/4	G 3/4

		SPRINGS		
		Adj. pressure range bar (psi)	Pres. increase bar/turn (psi/turn)	Std. setting Q=5 (l/min.) bar (psi)
<b>20</b>	Valve 1	20-100 (290-1450)	24 (348)	50 (725)
	Valve 2	50-210 (725-3000)	47 (682)	200 (2900)
<b>35</b>	Valve 1	20-100 (290-1450)	24 (348)	50 (725)
	Valve 2	100-350 (1450-5000)	82 (1189)	300 (4350)

Tamper resistant cap  
ordering code 11.04.23.003  
Mat. no. R930000754



**Preferred types**

Type	Material number
05900603042000A	R930059057
05900603043500A	R930059058

Type	Material number

**Dimensions**

