

Part number:

**HYDROMA**  
HYDRAULICKÉ SYSTÉMY

**HIDROMA**  
SISTEMS  
UKŁADY HYDRAULICZNE

**HYDROMA**  
ГИДРАВЛИЧЕСКИЕ СИСТЕМЫ

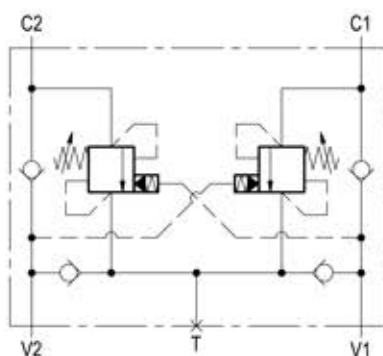
RE 18308-74/04.10  
Replaces: RE 00171/02.07

## Motion control



VAA-B-SICN-ST-250

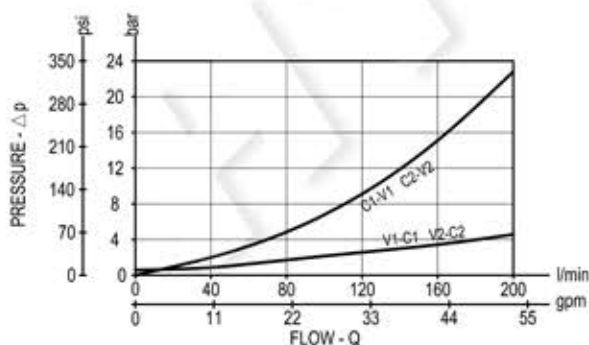
05.71.44 - X - 05 - Z



### Description

It provides static and dynamic motion control by regulating flow and pressure IN and OUT of the hydraulic motor at ports C1 and C2. When installed close to the motor, it can stop runaway in case of hose failure. The check sections allow free flow into the motor and prevent reverse movement; the pilot assisted relief valves control the movement when pilot pressure is applied. A system of check valves allows cross line relief; an optional make-up port (T) allows to compensate for any volume change.

### Performance



### Technical data

#### Hydraulic

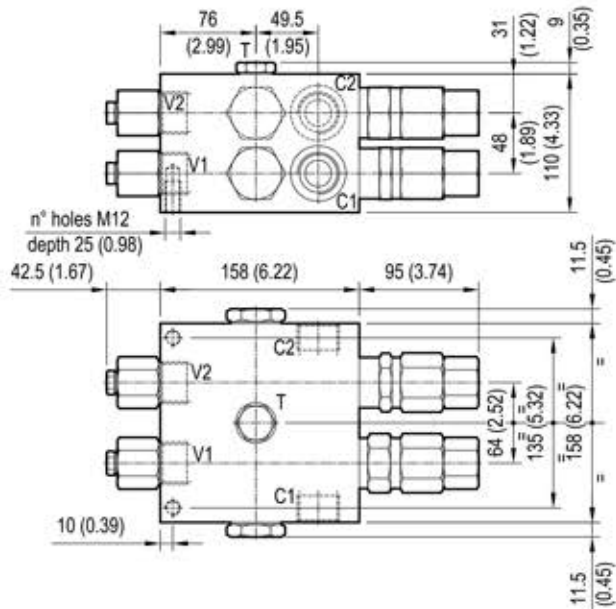
Operating pressure	bar (psi)	up to 210 (3000)
Max. flow	l/min (gpm)	200 (53)
Relief setting: at least 1.3 times the highest expected load.		

#### General

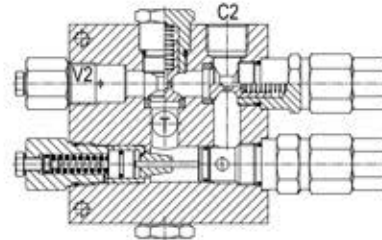
Manifold material	Aluminium	
Note: aluminium bodies are often strong enough for operating pressures exceeding 210 bar (3000 psi), depending from the fatigue life expected in the specific application. If in doubt, consult our Service Network.		
Weight	kg (lbs)	10.8 (23.8)
Fluid temperature range	°C (°F)	between -30 (-22) and +100 (212)
Other technical data	see data sheet RE 18350-50	

**Note:** for applications outside these parameters, please consult us.

## Dimensions



[ mm (inches) ]



## Ordering code

**05.71.44 X 05 Z**

Motion control

Pilot ratio

= 03 8:1

= 10 2.8:1

Port sizes

V1-V2

C1-C2

T

G 1

G 1

G 5/8

### SPRINGS

	Adj. pressure range bar (psi)	Pres. increase bar/turn (psi/turn)	Std. setting Q=5 (l/min.) bar (psi)
= 35	100-350 (1450-5000)	62 (899)	150 (2200)

**Type**                      **Material number**

05714403053500A

R930002507

05714410053500A

R930002509

**Type**

**Material number**