

Part number:

**HYDROMA**

HYDRAULICKÉ SYSTÉMY

**HIDROMA  
SYSTEMS**

UKŁADY HYDRAULICZNE

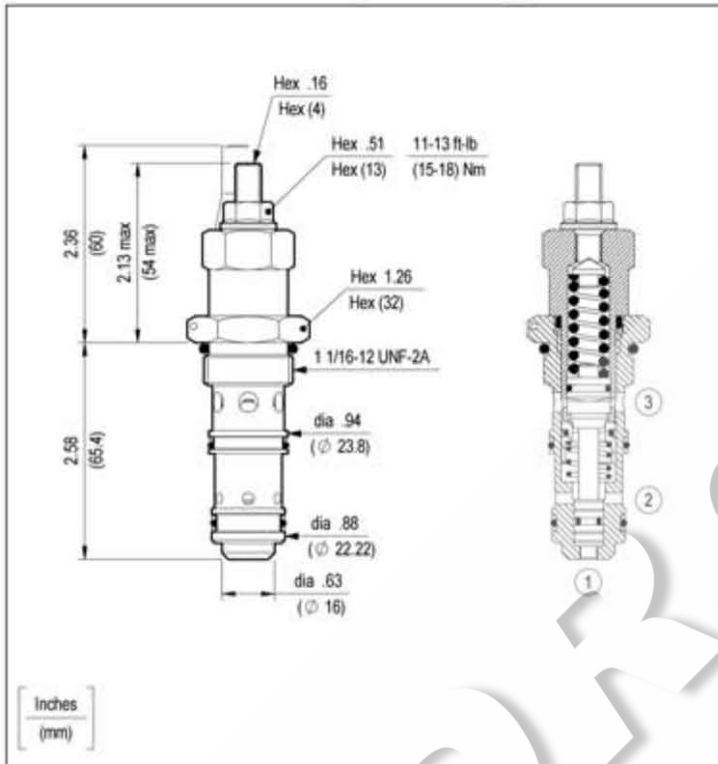
**HYDROMA**

ГИДРАВЛИЧЕСКИЕ СИСТЕМЫ

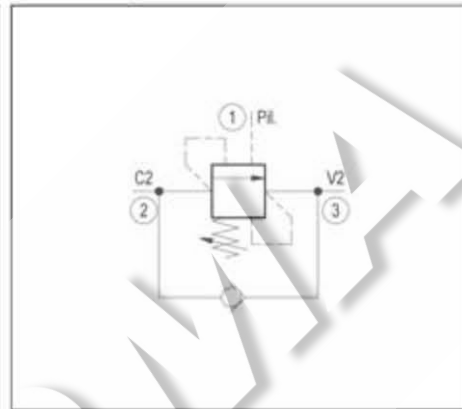
**COUNTERBALANCE, STANDARD POPPET TYPE  
DIFFERENTIAL AREA  
SPECIAL CAVITY**

**VBSO-SEC-30**

**04.52.04 - X - 99 - Z**



When pressure at 3 rises above the spring bias pressure, the check seat is pushed away from the piston and flow is allowed from 3 to 2. When load pressure at 2 rises above the pressure setting, the direct-acting, differential area relief function is activated and flow is relieved from 2 to 3. With pilot pressure at 1, the pressure setting is reduced in proportion to the stated ratio of the valve, until fully open with free-flow from 2 to 3. The spring chamber is drained to 3, and any back-pressure at 3 is additive to the pressure setting in all functions.



**TECHNICAL DATA**

Max. pressure: 5000 psi (350 bar)

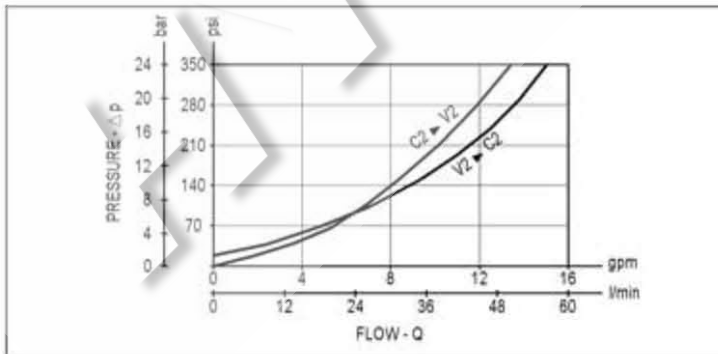
Max. flow: 16 gpm (60 l/min)

Special cavity : 063 (see page CT.S.002.U)

Installation torque : 86-95 ft-lb (116-128 Nm)

Weight: 0.551 lbs (0.250 Kg)

Pressure setting: at least 1.3 times the load induced pressure



|           |                    |
|-----------|--------------------|
| <b>X</b>  | <b>PILOT RATIO</b> |
| <b>03</b> | <b>4.2 : 1</b>     |
|           |                    |
|           |                    |

| <b>Z</b>  | <b>SPRINGS</b>              |                                       |  |
|-----------|-----------------------------|---------------------------------------|--|
|           | Adj. press. range psi (bar) | Press. increase psi / turn (bar/turn) | Standard setting psi (bar) (Q=5 l/min) |
| <b>20</b> | 870-3000 (60-210)           | 812 (56)                              | 2900 (200)                             |
| <b>35</b> | 1450-5000 (100-350)         | 2001 (138)                            | 5000 (350)                             |
|           |                             |                                       |  |
|           |                             |                                       |  |

| <b>OPTIONS</b>   |             |
|--|-------------|
| Ordering code  | Description |
| 11.04.23.002   | Sealing cap |
| Special settings available. Contact factory authorized representative for ordering code. |             |