

Part number:

HYDROMA

**HIDROMA
SISTEMS**

HYDROMA

HYDRAULICKÉ SYSTÉMY

UKŁADY HYDRAULICZNE

ГИДРАВЛИЧЕСКИЕ СИСТЕМЫ

FT 243/5 - S

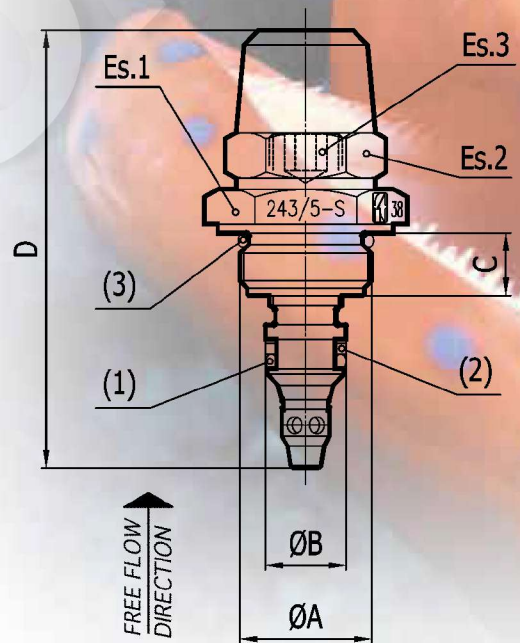
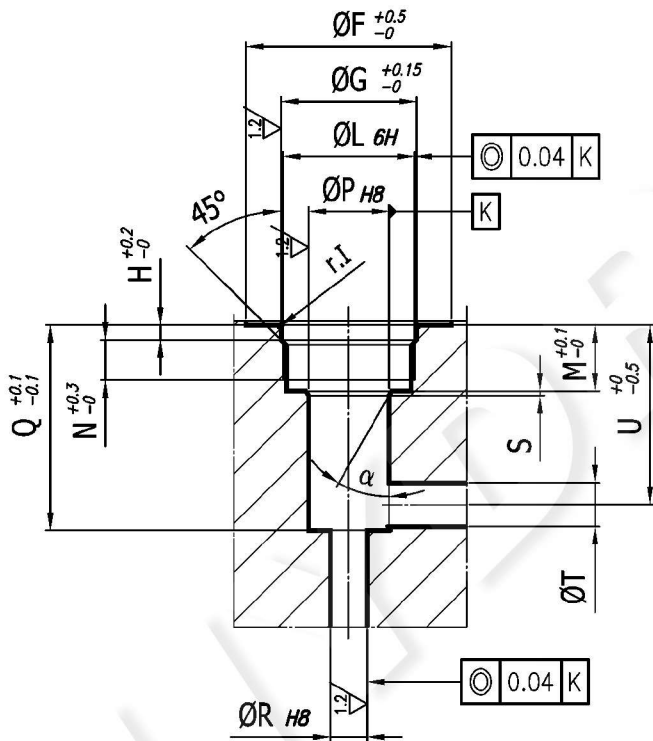


MATERIALS

| | |
|--------|----------------------|
| BODY | ETG 100 |
| NEEDLE | 35SMNPB10 - AISI 303 |
| OR | NITRILE |
| NUT | 35SMNPB10 |
| BK | PTFE |

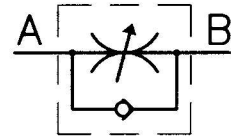
EXAMPLE FOR ORDERING

| | CODE | TYPE | VITON SEAL |
|-----------------|-------------|------|------------|
| STEEL | FT 243/5-S | 34 | V |
| STAINLESS STEEL | FT 2243/5-S | 34 | - |



DIMENSIONS

| TYPE | A | ØB | C | D | Es.1 | Es.2 | Es.3 | (1) OR | (2) BK | (3) OR | ØF | ØG | H |
|------|---------|----|------|-----|------|------|------|--------|--------|--------|----|------|-----|
| 14 | M17X1 | 10 | 8.5 | 59 | 22 | 17 | 4 | 106 | 106 | 2056 | 26 | 17.5 | 2 |
| 38 | M18X1 | 11 | 8.5 | 59 | 24 | 19 | 5 | 2031 | 2031 | 2062 | 28 | 18.5 | 2 |
| 12 | M22X1.5 | 14 | 13.5 | 87 | 27 | 22 | 7 | 2043 | 2043 | 2075 | 33 | 22.5 | 2.5 |
| 34 | M27X1.5 | 18 | 18 | 106 | 32 | 27 | 9 | 2056 | 2056 | 3093 | 35 | 28 | 3.5 |



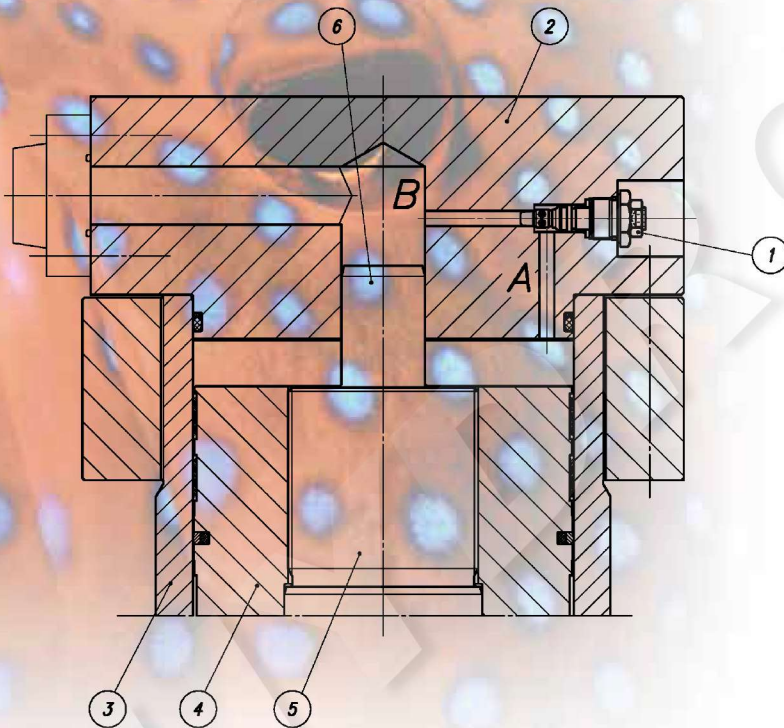
SINGLE-ACTING BRAKING VALVES BLEED-AIR

They are composed of a needle throttling, inside which there is a ball single-acting valve. They can be used in the assembling in manifolds and integrated blocks and are also used as cylinder braking valves. This kind of valve can be used also as air breather. By removing the cap nut it is possible to unscrew the needle and uncover the coaxial passage which allows the breather of the underlying chamber.

Recommended filtration: 60 micron or inferior.
Max. working pressure: 300 bar



FT 243/5-S

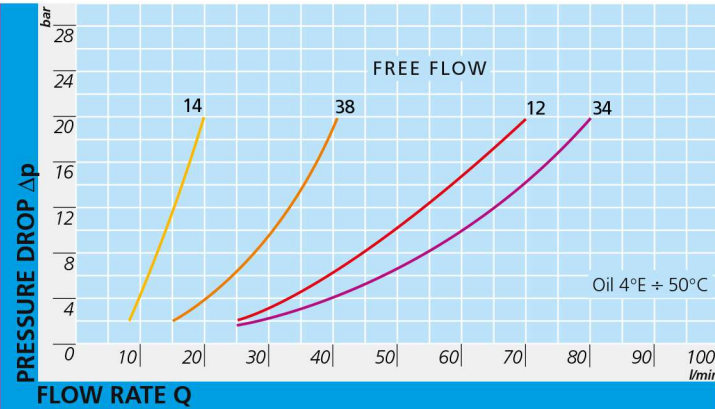


| DESCRIPTION | |
|-------------|------------------|
| 1 | VALVE FT 243/5-S |
| 2 | CYLINDER HEAD |
| 3 | BARREL |
| 4 | PISTON |
| 5 | STEM |
| 6 | PIN OF BRAKE |

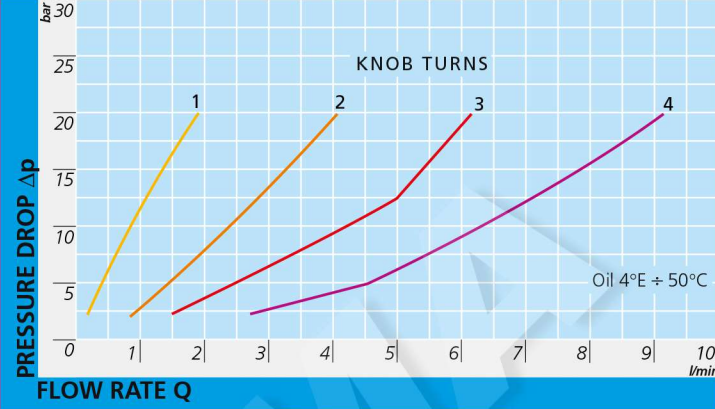
DIMENSIONS

| TYPE | ∅L | M | N | ∅P | Q | ∅R | S | ∅T | U | R.I | α° |
|------|---------|----|-----|----|------|----|-----|-----|------|-----|-----|
| 14 | M17x1 | 9 | 5.5 | 10 | 28 | 4 | 0.6 | 4.5 | 25 | 0.3 | 30° |
| 38 | M18x1 | 9 | 5 | 11 | 28 | 5 | 0.6 | 6 | 24.5 | 0.3 | 30° |
| 12 | M22x1.5 | 15 | 10 | 14 | 40.5 | 8 | 1 | 8 | 36 | 0.3 | 20° |
| 34 | M27x1.5 | 21 | 15 | 18 | 54.5 | 10 | 1.5 | 10 | 48.5 | 0.5 | 20° |

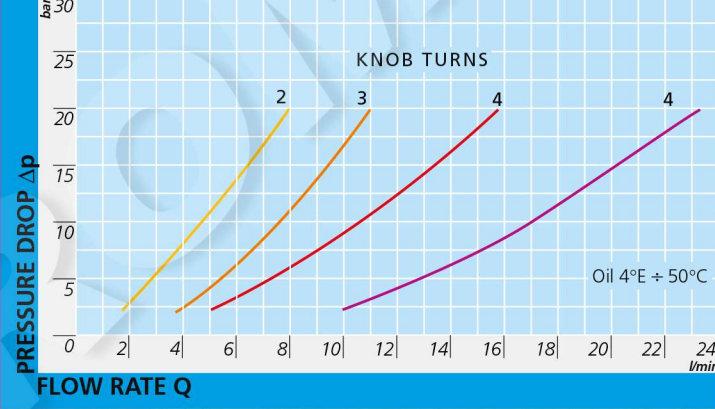
FT 243/5 - S



FT 243/5 - 14 - S



FT 243/5 - 38 - S



FLOW RATE CURVES

FT 243/5-S

