

Part number:

HYDROMA

HYDRAULICKÉ SYSTÉMY

**HIDROMA
SISTEMS**

UKŁADY HYDRAULICZNE

HYDROMA

ГИДРАВЛИЧЕСКИЕ СИСТЕМЫ

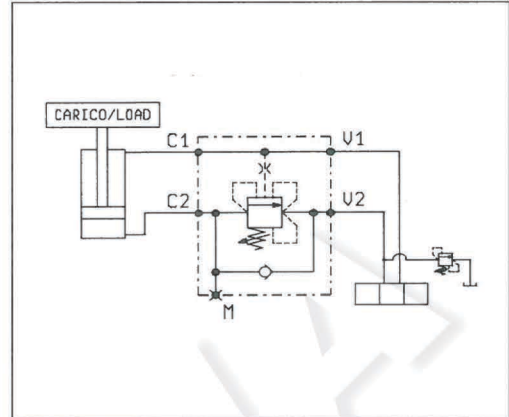
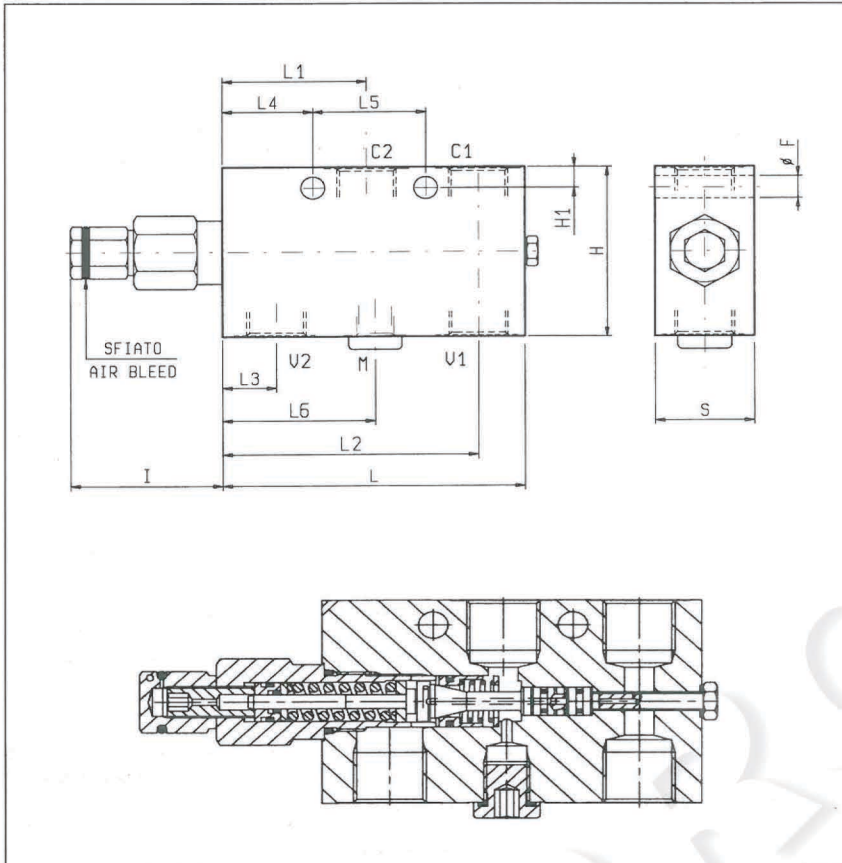
**BILANCIAMENTO, SEMPLICE EFFETTO, SERIE "30",
VERSIONE "CC"**

Pag. 5.17.30

PILOT ASSISTED, "CC" TYPE, SERIES "30" OVERCENTRE

A-VBSO-SE-CC-30-PL

08.45.17 - X - Y - Z



DATI TECNICI / TECHNICAL DATA

Pressione max. 350 bar
Max. pressure

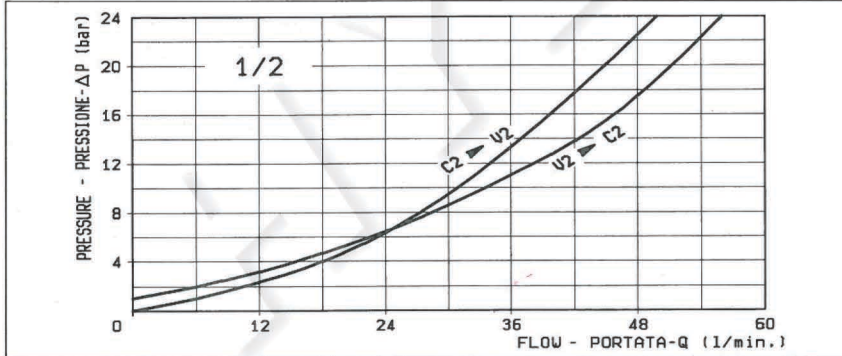
Portata max. vedi diagramma
Flow see performance graph

Taratura della valvola: almeno 1.3 volte superiore alla pressione indotta dal carico
Pressure setting: at least 1.3 times the load induced pressure

Cappello per piombatura Codice/Ordering code
Sealing Cap 03.05.01.002

Collettore in acciaio
Steel body

35	.54	40	32	19.5	91	52	109	53	8	65	8.5						1/2	1.85
30	-	40	32	19.5	91	52	109	53	8	55	8.5						3/8	1.33
30	-	40	32	19.5	91	52	109	53	8	55	8.5						1/4	1.15
S	L6	L5	L4	L3	L2	L1	L	I	H1	H	F						Y	Peso kg Weight kg



X	RAPPORTO DI PILOTAGGIO PILOT RATIO
03	4.2 : 1

Z	MOLLE / SPRINGS				
	Campo taratura min - max bar Adj. press. range bar	Incremento press. bar / giro vite Press. increase bar / turn	Taratura standard bar (Q = 5 l/min) Std. setting bar (Q = 5 l/min)	Cod. ordinazione Ordering code	Colore Colour
20	60-210	75	200	03.51.01.106	verde green
35	100-350	165	350	03.51.01.171	giallo yellow

Y	ATTACCHI / PORT SIZE	
	V1-V2-C1-C2	M
09	G 1/4	
02	G 3/8	
03	G 1/2	G 1/4

Marzo 99